



Archbishop Chapelle High School

Monthly Administrative Letter (Volume 2)

November 2008

Principal's Message

Mary Beth Drez

As we begin the month of November, I would like to take this opportunity to wish you and your family a most happy Thanksgiving season. It is easy to get caught up in all of the problems in our lives, that we can forget our many blessings. I must say that it is a blessing for me to have the opportunity to work with our wonderful teachers, staff and especially our students.

The **Outstanding Catholic Student Award** is the highest honor a Chapelle student can receive. This award is presented annually to students on each level who demonstrates the following ideals in her Christian life: moral and ethical behavior based on Christ's teachings, a character and attitude which reflect Catholic principles, a concern for the Chapelle community and her family life, and involvement in her church parish as well as service to the broader community. This year's recipients are:

Class of 2008	Michelle Rau
Class of 2009	Stacey Meehan
Class of 2010	Madeline Ruiz
Class of 2011	Jennifer Boudreaux
Class of 2012	Catherine Owers

On behalf of the entire Chapelle community I want to **congratulate** these fine young women for being models of what living your religion is all about.

Special **congratulations** to **Emily Boudreaux, Bethany Olivier and Mary Tamporello** who have been named **National Merit Commended Students** in the **2008 National Merit Scholarship Program**. Congratulations also to **Janaea Ivory** who was named an **Outstanding Participant in the National Achievement Scholarship Program**. We are very proud of their hard work and wish them continued success.

The next **Parents' Club** general meeting is **Tuesday, November 18, 2008**. Teachers will be in the gym by department from **7:00 p.m. to 8:00 p.m.** for very **brief conferences**. Should you need to speak with a teacher at any time, please don't hesitate call school and leave a message. Good communication usually solves problems before they escalate.

I would like to **thank you** for all your continued support. I consider it a privilege to serve you and your daughters as the Principal of Archbishop Chapelle High School. God bless you.



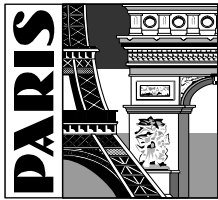
When turning in your Campbell's labels, we need the UPC part of the label ONLY. If you're in doubt of what to send, send the entire label and we'll take care of the rest. Keep them coming!!!!

Earn extra points for your school !!!

Congratulations to the following band members for qualifying in the 2008 La. All-State Honor Band. They are Kristie Stein, Adrienne Cashio, Courtney Brehm, Jessi Robelot, and Jordan Robelot. The quintet will perform with other top musicians from around the state in November at the La. Music Educator Association's annual convention. Congratulations also goes out to the Chapellette's and band for their performance at the Camellia Marching Band Competition held at Northshore High School in October. The Chapellettes and Drum Section earned superior ratings, and the Overall Band earned an excellent rating. The Band and the Chapellettes performed at the La. Showcase of Marching Bands state competition in Lafayette. The drum section earned an excellent rating, while the drum major, Chapellettes, and band earned superior ratings. The overall group placed second in the AAA class out of nine groups.



***Trip to
Paris, Provence
and
Barcelona -
Summer of 2009***



Educational tours expand students' horizons, improve grades - because classroom lessons take on a new meaning - and enhance college prospects as more colleges are putting emphasis on traveling and studying abroad. Cities included in the tour: **Paris, Avignon, Nîmes, Aix-en-Provence, Carcassonne and Barcelonna.** Special attractions included: **Notre Dame Cathedral, Musée d'Orsay, Palais des Papes Amphitheater Calanques, Parque Guell and Picasso Museum.** Optional attractions: Versailles, Barcelona Flamenco Evening and Montserrat.

For more information, please contact **Mrs. Boudaba** as soon as possible to take advantage of the lowest fee. She can be reached at **467-3105 ext. 284** or **kboudaba@archbishopchappelle.org**

Cross Country Nov. Meet Schedule

Nov. 1	Br. Martin Invitational	City Park
Nov. 6	District Girls	City Park
Nov. 8	Jr. High District	City Park
Nov. 12	Metro	City Park
Nov. 18	Cross Country State	Natchitoches



**BROTHER MARTIN
HOMECOMING QUEEN**

Senior **Ashley Niette** was named **Homecoming Queen** of Brother Martin High School.



**ACHS Volleyball
Nov 2008 Schedule**

Nov 3	Bi-District	TBA
Nov 12-15	LHSAA State Volleyball Tournament	TBA



Senior **Jessica Dupuy** was named **Homecoming Queen** of Archbishop Rummel High School.

Congratulations to Bethany Olivier who auditioned and were selected for the **LMEA All-State Honor Chorus**. They will rehearse and perform a concert in Baton Rouge in November.

**Travel to Italy in Summer of 2009
Sign up now**

*We will be visiting Venice, Florence, Pisa, Rome, Vatican City, the Colosseum, Assisi, Sorrento, Pompeii, and Capri including an island cruise and more!!!
Trip open to students, parents, and friends of Chapelle.*

*Email Mrs. Perdomo at
eperdomo@archbishopchappelle.org
or call her at 779-9979 for more info.*



Nov 3 - 9:00 a.m. Students report to school - Staff Development A.M. - NO BUS SERVICE

Nov 4 - NO SCHOOL; Election Day; Parents' Club Board Meeting - **7:00 p.m.** Murphy Conference Room

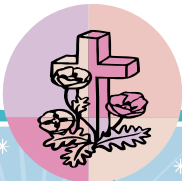
Nov 6 - Early Dismissal 12:06 p.m.; NO P.M. BUS SERVICE; OPEN HOUSE - **5:30 - 7:30 p.m.**

Nov 7 - NO SCHOOL

Nov 18 - Parents' Club General Meeting - 7:00 p.m. Gym

Nov 20 - Advisory Board Meeting - 7:00 p.m. Library

Nov 24-28 - Thanksgiving Holiday - NO SCHOOL



All Saints' Day...All Souls' Day

On All Saints Day, November 1, the Catholic Church pays tribute to those who lived virtuous lives, followed the teachings and examples of Christ, and are now in heaven. At Chapelle, we will honor the saints in heaven and ask them to intercede for us during our All Saints Day Liturgy.

On November 2, All Souls' Day, we especially pray for the souls of those who have gone before us and ask God to bring them into eternal life with Him.



Please indicate the names of those you wish to enter into the
Chapelle Prayer Intention Book

Your loved ones will be remembered in the daily prayers, Liturgies and monthly Prayer Services at school.



Return this list by way of your daughter to the Campus Ministry Office
or fax the names of your loved ones to 466-3191

November



Lyn Moore
Campus Ministry

Prayer to End Abortion

Lord God, I thank you today for the gift of my life, and for the lives of all my brothers and sisters. I know there is nothing that destroys more life than abortion, yet I rejoice that you have conquered death by the Resurrection of Your Son.

I am ready to do my part in ending abortion. Today I commit myself never to be silent, never to be passive, never to be forgetful of the unborn.

I commit myself to be active in the pro-life movement, and never stop defending life until all my brothers and sisters are protected, and our nation once again becomes a nation with liberty and justice not just for some, but for all. Through Christ our Lord, Amen!

Rev. Frank Pavone
Gospel of Life Ministries

Chapelle Hi-Steppers
Bingo



Saturday, Nov. 15

Doors open at 12 noon
Bingo starts at 12:30 p.m.

\$10 for ten games

Christmas Concert
Sunday, December 7
6 :00 p.m. - Gym
\$3 Admission

Chapelle students are admitted free with I.D.



A Note from the President
Jane Ann Frosch

*The Advancement Office has officially kicked off the Parents Annual Giving Drive. You should have received information in the mail regarding this very important endeavor for our school. Each family will need to **return the pledge card** you received in the mail to our school office. Payments may be made when you return your card or throughout the school year, whichever is most convenient for your family. You may also make your **contributions online** through our website at www.archbishopchapelle.org*

The Advancement Office is working diligently with parent volunteers in an effort to contact every family in the next two weeks regarding this year's Annual Giving. Parent volunteers will be calling you soon to remind you to return your card. We appreciate you taking their calls.

*This **campaign** raises **unrestricted funds** to help **supplement the annual operating budget** of the school. We **appreciate your generosity and investment** in the education of your daughter.*



Election Year Prayer

Lord Jesus Christ, You told us to give to Caesar what belongs to Caesar, and to God what belongs to God.

Enlighten the minds of our people during this election year. May we choose a President of the U.S., and other government officials according to Your divine will.

Give our citizens the courage to choose leaders of our nation who respect the sanctity of unborn life, the sanctity of marriage, the sanctity of marital relations, the sanctity of the family and the sanctity of the aged.

Grant us the wisdom to give You, what belongs to You, our God. If we do this, as a nation, we are confident You will give us an abundance of Your blessings through our elected leaders. Amen.

PARENT NEWSLETTER

...From the College Advisor, Karen Moran

November 2008

SCHOLARSHIP AWARDS

Congratulations to four seniors who have received scholarship letters. As of the printing of this newsletter, Andrea Aleman, Megan Rabito, and Jamie Roussel have all received scholarships to Spring Hill College. Jamie also received a scholarship to the University of Mobile. Katherine Schluter's award is to Franciscan University of Steubenville. Any seniors who receive scholarships should bring a copy or e-mail one to Mrs. Moran (e-mail address is at end of this newsletter) for recognition in the graduation program and at Senior Awards night. You don't have to accept the scholarship or attend the college to be recognized for earning it.

ACT PREP AT JESUIT

An ACT Test Preparation course is offered at Jesuit during the fall, spring, and summer. The course is intended primarily for Jesuit High School students, but students from other high schools are welcome. Space is limited. Students will benefit from the course if they have already completed English II, Algebra I, and Geometry. The cost is \$325. For dates of the course and other information, e-mail Malcolm Villarrubia at villarrubia@jesuitnola.org or call 483-3958.

HOW DO I RECOGNIZE A SCHOLARSHIP SCAMMER?

A scammer:

- States you've won an award for which you didn't apply.
- Does not supply valid contact information.
- Guarantees you will win an award.
- Requires personal financial information (such as credit card numbers or checking account numbers to verify or hold a scholarship).

HOW DO I RECOGNIZE A LEGITIMATE SCHOLARSHIP SERVICE?

A legitimate service:

- Sends information about awards when you request it.
- Makes contact information available upon request.
- Does not guarantee you will win an award.
- Should not direct you to a fee-based provider because they know that financial aid information is readily available for free.

SENIOR PARENTS

LSU has postponed the implementation of the first-year residency requirement so your daughters do not have to live on campus their freshman year.

If your daughter has applied to Tulane, you need to register her for the CSS/Financial Aid Profile at www.collegeboard.com. The information collected on the profile helps colleges to award private grant and scholarship funds. You can include explanations about special circumstances on the application so the colleges reviewing your information can make their decisions knowing as much as possible about your family.

JUNIOR PARENTS

Juniors should begin taking the ACT in December or February to begin earning scores and getting familiar with the test. The test is offered 5 times during the school year (Oct., Dec., Feb., April, June). Loyola, LSU, Dillard, and Tulane are Louisiana colleges which have indicated that they require the Assessment Plus writing to be used as additional admissions criteria. The registration date for the December test is November 7. The web site is www.actstudent.org.

JUNIOR AND SENIOR PARENTS

Please remind your daughters of the following when they register for the ACT Assessment Test:

- Social Security Number must be entered correctly.
- The year of graduation must be entered.
- Chapelle's code of 191777 must be entered.
- The TOPS code of 1595 should be included as one of the four college/scholarship choices

8th, 9th, 10th GRADE PARENTS

Please help the faculty to impress on your daughters the importance of studying, preparing and making good grades **now**.

All students need to take an admission test (ACT or SAT) to get into college. All the work they do throughout high school helps to prepare them for these standardized admission tests.

Some possibilities with test scores:

16-19 Consider a two year community college or a liberal arts four year college

20-23 Traditional colleges such as Louisiana Tech, SLU, UNO, ULL, ULM, Northwestern, McNeese State, and LSU accept these scores

24-27 Selective colleges search for students with these scores

28-36 Could land major scholarships to most colleges

ACT qualifying scores for a TOPS scholarship:

20 Opportunity Scholarship

23 Performance Scholarship

27 Honors Scholarship

Questions for the College Advisor may be e-mailed to Karen Moran at kpique@archbishopchapelle.org or call at 467-3105, ext. 130. Please include a phone number where you can be reached with the e-mail or phone message.



Cross-Country Meet

Congratulations to Kendall Klein who received 3rd place for Junior High.

The girls' varsity placed 1st in the meet with the following students placing in the Top 10. They are Katelynn Templet, Bailey Theall, Mikella Sorensen, Rae Famiglio, and Katie Famiglio.

The Archbishop Chapelle High School Chapter of the National Honor Society and the Mu Alpha Theta National Mathematics Honor Society recently inducted new members for the 2008-2009 school year. Guest speaker for the induction was Mary Beth Drez, Principal of Archbishop Chapelle.

New members of the Mu Alpha Theta National Mathematics Honor Society:

Class of 2009 - Syeda Fabiha, Pegah Namazizadeh, Katelyn Ory, Rachel Rodriguez, Madelyn Roth, Elaisa Vanegas, and Alise Vedrenne. **Class of 2010** - Madeline Broussard, Adrienne Cashio, Michelle Centanni, Megan Eilers, Lindsay Freiberger, Taylor Gorman, Cathy Juarez, Amanda Meyer, Ashley Meyn, Stephanie Meyn, Mint Rodboon, Madeline Ruiz, Amanda Russo, and Tiffany Willis. **Class of 2011** - Jennifer Boudreaux, Aubry Brayard, Rebecca Dahl, and Mallory Migliore



Mu Alpha Theta officers

President—Mehgan O'Connor

Vice President—Kylie Gonzales

Secretary—Emily Boudreaux & Linda AuDuong

Treasurer—Danielle Wetzel

Historian—Rebecca Milazzo

New members of the National Honor Society:

Class of 2009 - Andrea Aleman, Briana Bocage, Courtney Brehm, Katie Calamari, Blanca Canales, Nicole Canedo, Elizabeth Crull, Lindsey Dessell, Lydia Dufresne, Angela Ellis, Syeda Fabiha, Jennifer Fath, Kylie Gonzales, Rachael Greene, Chandni Gulati, Madison Hill, Jenna Hooper, Rebecca Hutchinson, Sabrina Kee, Maggie LeBlanc, Megan Lynch, Laurel Madere, Rebecca Martinez, Ilayna Mehrrens, Rebecca Navarre, Katelyn Ory, Ashley Parker, Jordan Robelot, Alexandra Rodemann, Diana Rooney, Madelyn Roth, Jamie Roussel, Sara Smith, Amber Stalcup, Molly St. Romain, Victoria Tran, Elaisa Vanegas, Victoria Whittington, and Rachel Winters. **Class of 2010** - Samantha Adler, Ariel Amedee, Sara Brignac, Alexis DeLanewille, Kelsey Driscoll, Gabriela Galeano, Taylor Gorman, Emily Hannan, Cathy Juarez, Dara Kennedy, Shelby Kiefer, Angela LeBlanc, Brooke Licali, Kaylyn Marcon, Alaney Maurin, Dana Rock, Kadie Rome, Amanda Russo, Molly Smith, Sidrah Syed, and Bailey Theall. **Class of 2011** - Niveen Attamari, Srinee Bajaj, Jordyn Berger, Hannah Bergeron, Jennifer Boudreaux, Yvette Bourgeois, Aubry Brayard, Caitlin Bucher, Dominique Duhe, Sara Duhe, Hallie Espanan, Paige Estave, Angela Exnicios, Hanna Fernandez, Nicole Fisette, Kristen Fowler, Stephanie Gardner, Taylor Heirsch, Erica Hingle, Jamie Kokemor, Jane LaGrange, Brooke Larsen, Mallory Migliore, Noel Netzhammer, Serein Mohamad, Erin O'Brien, Alexis Pellittere, Julie Quellmalz, Emily Radcliffe, Jessica Robelot, Kassie Sharbonno, Holly Spadoni, Amanda Stevens, and Melanie Young.

National Honor Society Officers

President - Linda Au Duong

Vice President - Madushani Wijetunge

Secretary - Emily Boudreaux

Treasurer - Julie Fridge

Historian - Hayley Eckert





OPEN HOUSE

SAVE THE DATE !!

***Emerald Gala
“Under the Tuscan Sun”***

**Thursday, November 6, 2008
5:30 p.m. - 7:30 p.m.**

SATURDAY, MARCH 21, 2009



*We are asking everyone to bring a **gift item, bottle of wine, spirits, or champagne** to the **Parents’ Club General Meeting on November 18, 2008**. For every bottle that you donate, your name will be entered in a drawing for **one free ticket** to the Emerald Gala. Remember the more bottles you donate, the better chance you have of winning those tickets...*

2008 “Chipmunk Classic” Golf Tournament



*The annual “Chipmunk Classic” Golf Tournament was held on Sunday, September 21 at Ormond Country Club & Golf Course. Thanks to our **hard working volunteers, our enthusiastic golfers and the generous support of the community** we were able to raise over **\$8,500**. These funds will be used to enhance the latest technology and to provide “cutting edge” curriculum materials for our students giving them the tools they need for a competitive global economy. A portion of the profit will go directly into the accounts of the Athletic Department and School Activities from the “Fun Hole” and the “Pro-Drive”.*

*Thanks to this year’s Chairman, **Mike Sorensen**, and his **dedicated Golf Committee** for making this year’s tournament a success.*



A Note from the Director of Student Life

Erin Alphonso

Christmas Dance Information

The **Christmas Dance** will be held at the Pontchartrain Center on **December 13, 2008** from **8:00 p.m. - 11:00 p.m.** with **Lock In** from **9:00 p.m. - 10:00 p.m.** Picture packets and dance tickets will be sold in advance to prevent long lines that evening. Ladies should wear a semi-formal dress with the length or slit not being any shorter than four inches above the knee. Open backs and low necklines are **NOT** allowed. Gentlemen should wear a suit or sportcoat with dress pants, dress shoes, and a tie. Details regarding the **dress code** can be found on **page 58** of the student handbook. Students are welcome and encouraged to bring in their dress for approval. Please review Chapelle’s **drug and alcohol policy** on **page 44**.

Breakfast Buffet

Eggs, grits, biscuits,
assorted pastries,
milk, juice and coffee

Portraits with Santa

or a Winter backdrop
2 - 5x7 portraits and 8 wallets

Games, Storytelling, Arts and Crafts

Performances by Chapelle

Cheerleaders, Chorale,
Chapelles and Hi-Steppers

Christmas Boutique



Reservations

received By November 21:
\$25 per alumnae and children
(additional family members \$5)

after November 21
\$30 per alumnae and children
(additional family members \$5)

Saturday, December 6, 2008

Breakfast with Santa Reservation Form

Name: _____ Year of graduation: _____

Number attending(alumnae & children)_____ Additional adults at \$5 each: _____

Address: _____

Phone: (home) _____ (office) _____ email: _____

Make checks payable to Archbishop Chapelle High School
Return reservation form and payment by November 21 to
Melanie Burns Stringer, Alumnae Director
Archbishop Chapelle High School
8800 Veterans Boulevard, Metairie, LA 70003